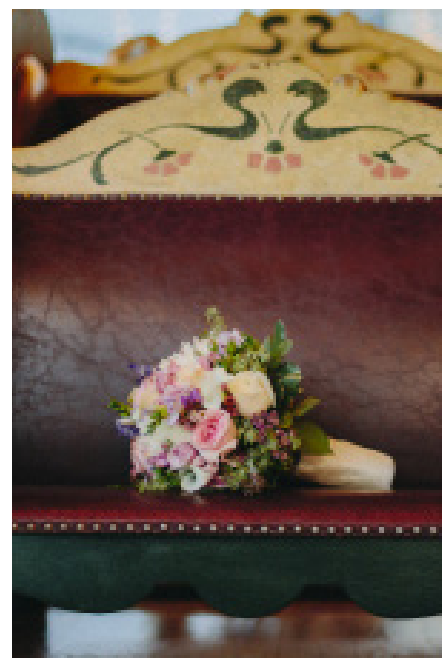




# Wedding Ceremonies

AT JANE'S CAROUSEL



*Available (on days or hours) when the Carousel is Closed to the Public*

2019



## Our Carousel pavilion and deck overlooking the East River is the perfect romantic venue for wedding ceremonies.

*A walk through appointment of the Carousel Pavilion is recommended to visualize the occasion in advance.*

**Simple Private Wedding Ceremonies** take place before opening or after closing hours for up to 100 guests. They are held in the pavilion and on the Carousel deck depending on the weather. These weddings are standing events however we will provide four 8 foot portable benches for guests who require seating as well as two 8' x 30" tables for wedding cake and light refreshments. Catering, party rentals and elaborate decorations cannot be accommodated during simple Private Ceremonies. Personal music can be played on the Carousel sound system and unlimited rides will be available throughout the event. Wedding photographers are welcome. Simple private wedding ceremonies at the Carousel are both intimate and magical.

### Winter / Early Spring

September 17, 2018 - May 12, 2019

Thursdays – Sundays

Maximum of 100 Guests

9:30 – 11:00am (before opening)

\$1,500

6:30 – 8:00pm (after closing)

\$1,800

### Late Spring / Summer

May 13, 2019 - September 15, 2019

Everyday except Tuesday

Maximum of 100 Guests

9:30 – 11:00am (before opening)

\$1,500

7:30 – 9:00pm (after closing)

\$1,800

\*Ok to arrive 30 minutes early for setup.

### *Additional Information*

An experienced licensed staff member will be present for operation of the Carousel throughout the event. You are responsible for the coordination, set up and clean up of your party. Microphones and amplified music are not permitted outside on the Carousel deck. The Carousel pavilion is heated but it is not air-conditioned. Folding doors fully open up along North (river) and South facades to allow for ventilation and breezes. Four 10' ceiling fans create cooling. There are no restrooms in the pavilion however bathroom facilities are nearby in Brooklyn Bridge Park.

Rates effective December 2018 and are subject to change.

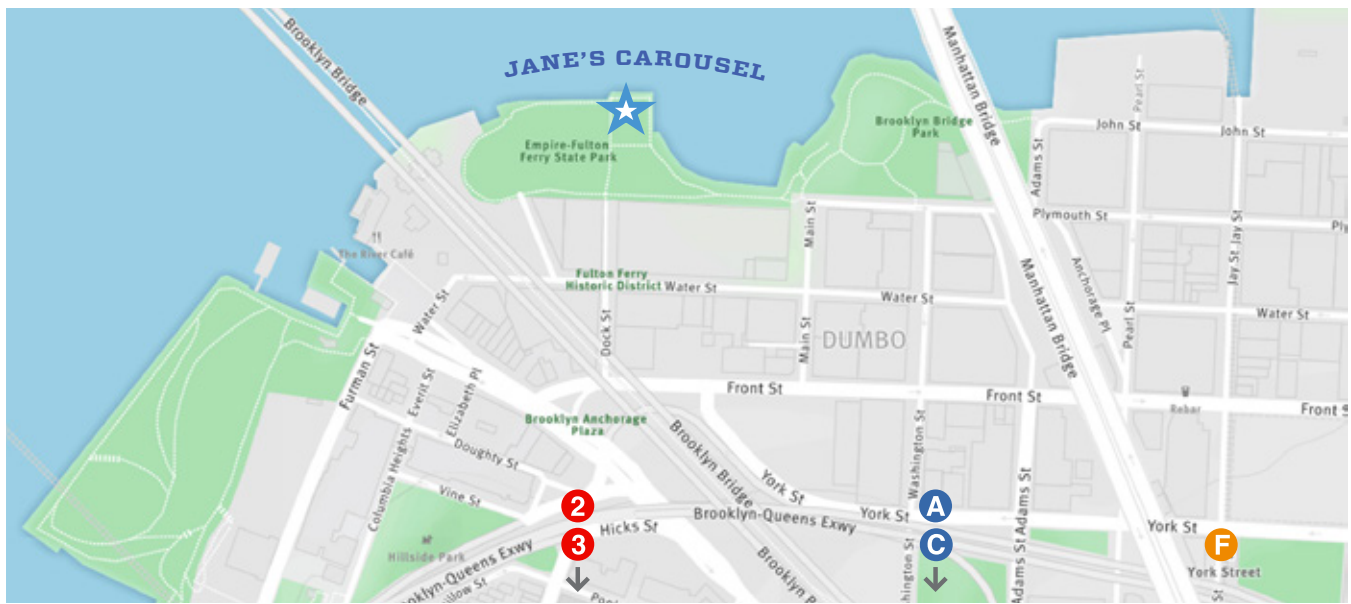
#### *Photo Credits*

Page 1: Bride on Horse: Pat Furey; Bouquet: The Wedding Central;  
Bride and Groom: Chloe Peter; C&P Photography;  
Dinner Table on Deck: Erica Camille

Page 2: Pavilion and Deck: Erica Camille;  
Bride with Bridesmaids: Shane JRG;  
Seated Dinner: Erica Camille

#### **For Booking Inquiries:**

**katie@janescarousel.org (718) 222-2502**



**Jane's Carousel** is located in the DUMBO section of Brooklyn Bridge Park, on the East River, between the Brooklyn and Manhattan Bridges. The Carousel is easily accessed from park entrances at Dock Street or Main Street.

### By Subway

- F F Train to York Street** Make a right when exiting the train station. Walk 1 block down Jay Street to Front Street. Turn left, walk 3 blocks to Main Street. Turn right and walk 2 blocks to the park entrance.
- A C A/C to High Street** If you are coming from Manhattan, exit at the rear of the train. Walk downhill on Cadman Plaza West (which becomes Old Fulton Street) to the river. Walk 1 block right on Water Street and left on Dock Street into the Park.
- 2 3 2/3 to Clark Street** Exit the station elevator and make a left onto Henry Street. Walk down Henry Street and turn left on Old Fulton Street. Continue downhill to the river and turn right on Water Street. Walk 1 block to the Park entrance at Dock Street into the Park.

### On Foot

If you have time, it's a thrilling walk over the Brooklyn Bridge from lower Manhattan to the Carousel. Take the footpath over the Bridge which exits on to Washington Street. Walk down the hill, toward the river on Washington Street to Front Street. Turn left on Front Street, walk 1 block to Main Street and turn right. Continue 2 blocks on Main Street to the park entrance at the river.

### By Ferry

The ferry is a fun way to come to the Carousel. [The East River Ferry Service](#) & [New York Water Taxi](#)

### By Car

**From Manhattan** First exit off the Brooklyn Bridge. Stay right down the exit ramp, to Cadman Plaza West, then curve left on to Old Fulton Street. Continue down Old Fulton St. toward the river and turn right on Front Street. Parking is available on Front Street or the corner of Main & Front Street. Enter the park at either Dock Street or Main Street.

**From Brooklyn** Take Atlantic Avenue to Boerum Place heading toward the Brooklyn Bridge. Boerum Place becomes Adams Street. Stay in the far left lane and turn left onto Tillary Street. Turn right on to Cadman Plaza West. At the end, turn left on to Old Fulton Street. Continue down Old Fulton St. toward the river and turn right on Front Street.

### Parking - Park Kwik Garage

- 37 Front Street (between Dock St & Main Street) 11201
- 45 Main Street (corner of Front & Main Street) 11201
- Adams Street (Between Front & Water Street)